

ESCALDÀRIUM
Bram de la Quimera

Ramon Solé

Violí

INTRO

A (flauta de bec)

10

15

18

21 PONT

A

26

29

32 B

35

39

The image shows a musical score for a violin. It begins with an 'INTRO' section, followed by a section labeled 'A (flauta de bec)'. The score is written in treble clef with a common time signature (C). Measure numbers 10, 15, 18, 21, 26, 29, 32, 35, and 39 are indicated at the start of their respective lines. A section labeled 'PONT' starts at measure 21. Section 'A' is marked with a box 'A' at measure 21 and again at measure 26. Section 'B' is marked with a box 'B' at measure 32. The score includes various musical notations such as eighth notes, sixteenth notes, and rests. There are also dynamic markings like 'z' and '7' at measures 29 and 30. The piece concludes with a change in time signature to 2/4 at measure 39.

ESCALDÀRIUM

44



47

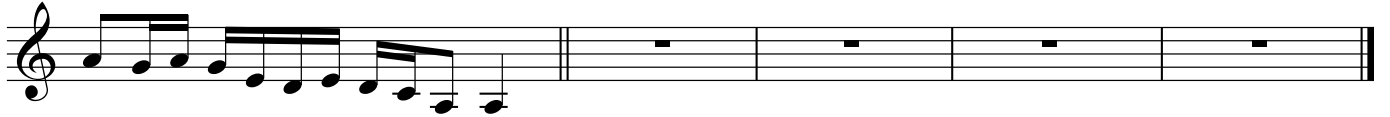


50



52

OUTRO



Tots els temes musicals de l'Escaldàrium estan registrats i són propietat de l'autor i del Ball de Diablers de Caldes de Montbui. Qualsevol ús està prohibit sense autorització i, en qualsevol cas, aquestes músiques no es poden utilitzar en activitats amb ànim de lucre. Per consultes o informació escriviu un correu a diablescaldes@gmail.com