

♩ = 145

Intro

First measure of the Intro, featuring a bass clef, 4/4 time signature, and a repeat sign. The melody consists of quarter notes with triplet markings over the first two notes.

Second measure of the Intro, continuing the melody with quarter notes and triplet markings.

Third measure of the Intro, featuring a first ending bracket labeled '1' and a handwritten note 'Solo 8 compasses' above the staff. The melody continues with quarter notes and triplet markings.

Fourth measure of the Intro, continuing the melody with quarter notes and triplet markings.

Fifth measure of the Intro, continuing the melody with quarter notes and triplet markings.

Repetir tres vegades

Sixth measure of the Intro, featuring a section marker 'A' and a measure number '37'. The melody continues with quarter notes and triplet markings.

Seventh measure of the Intro, continuing the melody with quarter notes, triplet markings, and accents (>) over the first two notes.

Pont 1

45

3 3 3 3 3 3 3 3 3 3 3 3

1.
2. 501

A

61 Interludi

3 3 3 3 3 3 3 3 3 3 3 3

Repetir A

3 3 3 3 3 3 3 3 3 3 3 3

77 B

1 2 3 3 3 3 3 3 3 3 3 3

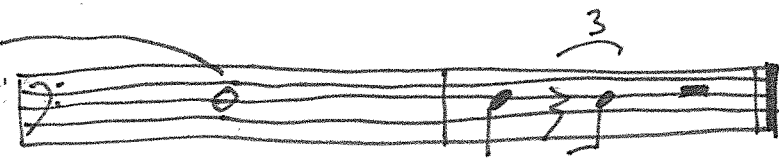
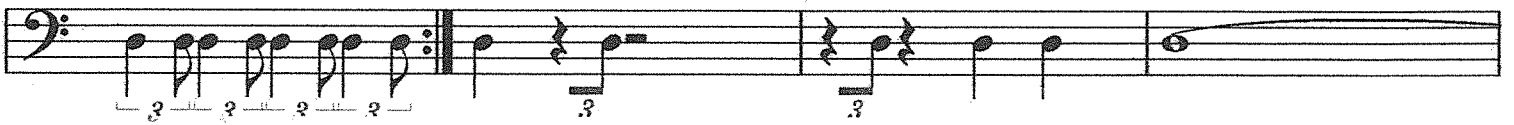
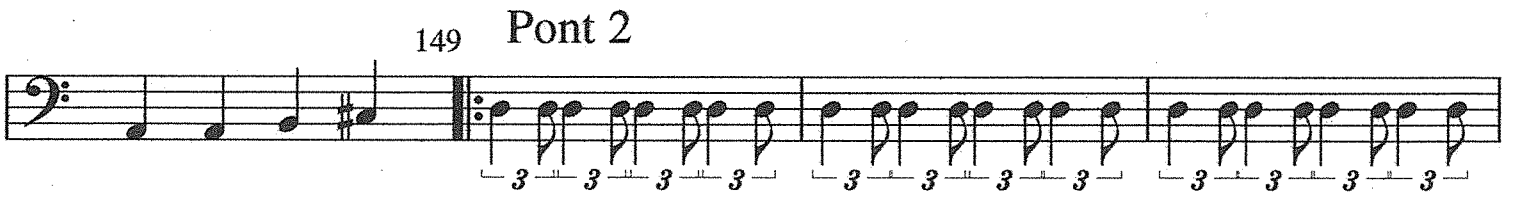
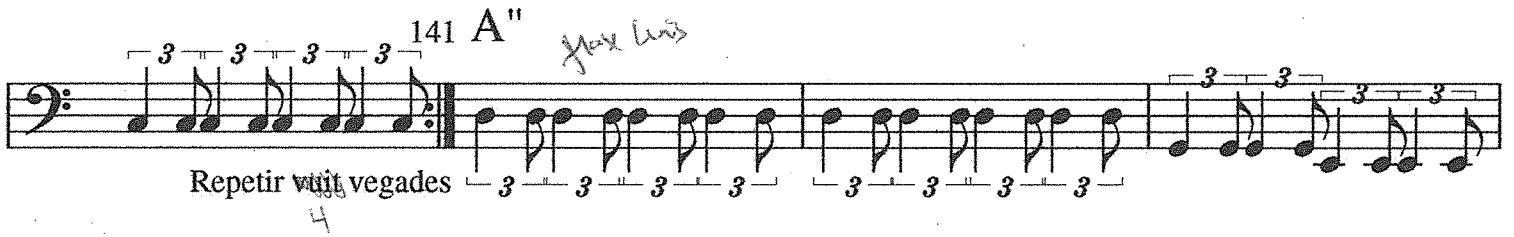
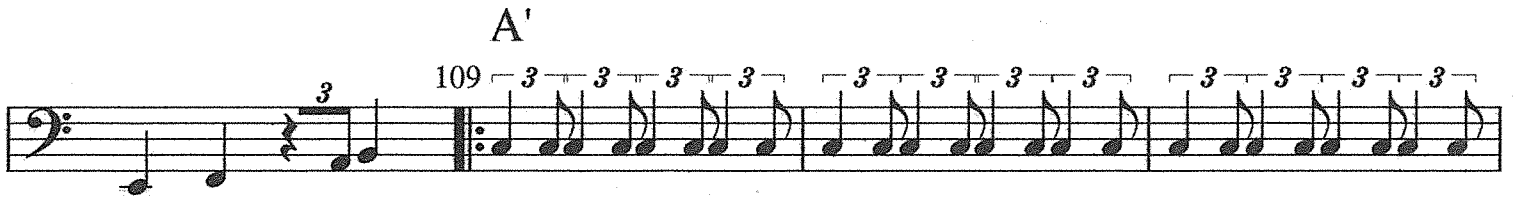
3 3 3 3 3 3 3 3 3 3 3 3

3 3 3 3 3 3 3 3 3 3 3 3

Pont 2

93

3 3 3 3 3 3 3 3 3 3 3 3



BAIX

CEPTRE DE FOC

♩ = 140

Intro

19 A

33

↳ Entra en la 2ª vez de la parte trasera.
E- B-7 D/F# G

Nº de veces que diga RAYON
E- B-7 D/F# G

FINAL

87 A' ← Entra la flauta travessa.

A C B E (a tempo)

115 Outro